



Splash Guards and Accidental Contact Guards

We have already designed and built a wide range of splash guard systems for our customers that are used both inside and outside industrial plants.

They typically consist of a load-bearing system of weather-proof GRP profiles infilled with transparent, weatherproof plastic sheets.

Additions to the splash guard system, such as holding frames for distribution boards, pipe supports, GRP cable duct systems, GRP doors and gates as well as special openings for sampling, have already been implemented.

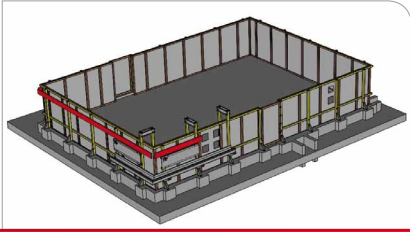
As the GRP splash guard systems used outside are also exposed to high wind loads, we are happy to provide a verifiable structural analysis prepared by an independent structural engineering office to demonstrate their stability.



Splash guards and accidental contact guards based on GRP sections and transparent plastic sheets.

GRP in the chemical industry

- Resistance in corrosive environments
- Machining and installation without flying sparks
- Resistance to weathering
- Low thermal conductivity
- Electrical insulation
- High strength with low weight
- Cost-effective in transport and handling
- Easy adjustment on site



GRP splash guards for sulphuric acid areas

The external dimensions of this GRP splash guard system are 11.5 x 8 m and its splash guard walls are 1.7 m high. The system is equipped with two doors, sampling points and pipe supports.



Portable splash guards

We can also design portable splash guard elements to enable easy access to the parts of the plant affected when repairs are needed.



Solid construction

Here is an example of how the individual components of the GRP frame are joined to each other. An internal GRP core with thread provides for excellent strength.



Handles

Ergonomically attached handles ensure easy transportation of the GRP splash guard.



Variable

We can implement a wide range of our customers' wishes and requirements for the geometry of a GRP splash guard system.



Packaging and installation

We package your products so that they arrive at the construction site safely. On request, our own installation team can also take over construction on site. If additional adjustments are then necessary, they can be made quickly on the spot.