

Stairs

The handrail of your GRP stairs does not feel really cold even in winter. This is due to the low thermal conductivity of the pultruded GRP profiles by Exel Composites.

Certified quality

All TC structures are usually developed having regard to DIN EN ISO 14122. Qualification to DIN EN ISO 9001:2008 confirms the excellence of our quality management. The pultruded GRP structural sections by Exel Composites comply with EN 13706/E23.



Stairs made of GRP as access to a water collection tank.

GRP in the chemical industry

- Resistance in corrosive environments
- Machining and installation without flying sparks
- Resistance to weathering
- Low thermal conductivity
- Electrical insulation
- High strength with low weight
- Cost-effective in transport and handling
- Easy adjustment on site



Special wall mount

Flights of stairs with special wall brackets are often necessary to meet the requirements of the local situation.



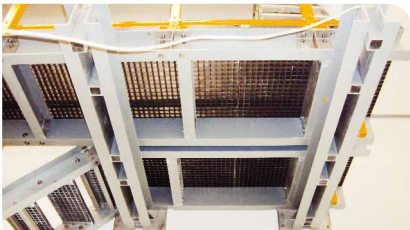
Construction on site without crane

If it is not possible to use a crane for construction on site, the individual parts of the stairway can also be brought manually and then assembled and installed on the spot. This reduces costs if the installation situation on site is complicated.



Sturdy construction

Our GRP stairs are usually designed in accordance with DIN EN ISO 14122. We also ensure that users on site always feel secure when walking on our inspection walkways.



GRP intermediate landing

GRP intermediate landings are included where major changes in height occur.



Stainless steel brackets

We also like to use stainless steel brackets for joining to concrete walls so that loads and bending moments can be properly transferred to the structure. As shown here, they can then also be suspended from the ceiling.



One-off items to large-scale production

From an individually designed, single flight of stairs, a small batch or large-scale production of stairs, we can implement the entire range in terms of design and production.